

# NEWSLETTER

3rd Term of the Year  
January/February 2025



## INTRODUCTION

In 2024, APEK celebrated its 30th anniversary, and the school obtained accreditation up to the final year, making LFIK a recognized institution by the French State. This is the result of the commitment of APEK members and successive management committees. We warmly thank all the volunteers, parents, and donors who have supported this ambitious project. We are happy to continue this journey and promote this school. More details can be found in this newsletter. And don't forget to mark your calendar for a coffee on Thursday – more details in the "Save the Date" section.

## Ongoing Projects



### Japanese Status Gakkou-Houjin



For more than 20 years, we have been discussing the evolution of LFIK's legal status. Officially becoming a school recognized by the Japanese state will strengthen the stability of our school and allow us to receive support from Kyoto Prefecture (subsidies, reduced transportation fees, etc.). We are pleased to announce that we are finalizing this project and invite you to an Extraordinary General Assembly on February 9th to validate the proposal. We plan to submit the application by the end of March 2025, and we hope to receive a response from Kyoto Prefecture within a few months.



### Osaka Branch



APEK is considering opening a branch in Osaka to anticipate competition from commercial school groups and to establish French education in the region. A survey conducted with French families in Kansai showed strong interest in this project. We have identified premises in Nipponbashi and have submitted our proposal for the call for tenders. If we are pre-selected by the end of February, the opening is expected for September 2026, with three elementary classes. As previously mentioned during the General Assembly on December 1, 2024, we are committed to ensuring this project is self-financing and an asset for the sustainable development of LFIK.



### 2025 School Year



The sustainability of our school depends on a minimum enrollment of 266 students, with financial balance achieved at 275 students, and optimal operation between 275 and 290 students. It is therefore crucial to maintain these numbers. We will launch a recruitment campaign in February for the 2025 school year, highlighting the excellence of French education at LFIK and the quality of life in Kyoto. We invite you to share your experiences to support our initiative. Additionally, our school is still not well-known among French speakers, both in Kansai and throughout Japan. Help us spread the word about LFIK to those around you, including outside of Kansai. As members of the managing association, you are all ambassadors of LFIK and co-responsible for its financial sustainability. We invite you to follow LFIK's social media:



## A Look at the School: A Testimonial from Mrs. MIYANO, Latin Teacher, A 28-Year Journey at the School



28 years ago, Mrs. Aline Doi gave me the opportunity to run a small weekly kindergarten class at the American school's premises. I still remember the laughter of the children, moments of joy, camaraderie, and learning. Every Saturday, a group of children, mostly from French families in Kyoto, would gather in a family-like and simple atmosphere. Every activity became an adventure: making paper necklaces, listening to stories, playing pétanque in the hallway... One child once told me: "Here, we have more fun than at home!" That compliment perfectly summarized the spirit of those moments. The creation of our school in 1997 was a true odyssey, marked by 4 or 5 successive moves, each bringing its own challenges and hopes, before finally finding a location worthy of our educational ambitions – our current site. From these many years, the faces and names of our former students remain etched in my memory. Flore, a dermatologist, Kenshin, a pilot, Simon, a painter in Berlin, Leonardo, a scientist in New Zealand, and so many others... Each journey reminds me of the richness of our mission. This high school owes its future to the dedication of the teachers, the educational team, and the families. Thanks to their commitment, our students advance confidently, supported by values of excellence, kindness, and openness. Together, we are preparing future generations to face the challenges of the world that awaits them. Dear families, we look forward to welcoming you into this community where each student can flourish and build a future illuminated by knowledge and respect.

### Save the Date!

|                       |  |
|-----------------------|--|
| THURSDAY, JANUARY 30  | Let's meet! Join us at LFIK between 8:00 AM and 9:30 AM for a friendly coffee            |
| SUNDAY, FEBRUARY 2    | LFIK booth at the French Institute of Kansai Market                                      |
| SUNDAY, FEBRUARY 9    | Extraordinary General Assembly for Gakkou-Houjin, Osaka projects, and the 2025-26 budget |
| FEBRUARY 12-14        | Internship for 9th Grade Students  |
| THURSDAY, FEBRUARY 20 | Carnival Party   |
| END OF FEBRUARY       | Osaka Branch Project –Results of pre-selection for the Nipponbashi site                  |
| TUESDAY, MARCH 25     | Newsletter #2 sent   |
| SUNDAY, MARCH 30      | Picnic on the Kamo River, location and time to be announced                              |
| END OF MARCH          | Gakkou-Houjin Project – Deadline for submitting the application                          |

### Let's Support Each Other!

#### Carnival on February 20: Call for Volunteers

The school party will be held on February 20 for our kindergarten and elementary students. The teaching teams will need parent volunteers to make this event a success. We are counting on you! Don't forget to mark your calendar.

#### 9th Grade Internships: Searching for Opportunities

Some 9th-grade students are still looking for internships. If you can host one of them, please contact the School Life Department. Your help is invaluable to our students!

#### Directory of Good Resources: Let's Share Our Tips

We would like to create a directory of good resources to make life easier for our community. If you have recommendations (doctors, dentists, carpooling, etc.), please share them via this [link](#). We will compile all your suggestions and distribute them to the entire school.

#### Parking Around LFIK: Important Reminder

We remind you that it is prohibited to park on the streets around the school to drop off or pick up children. Adhering to this rule is essential for maintaining good relationships with our neighborhood. We rely on your cooperation.

#### French Institute of Kansai Market

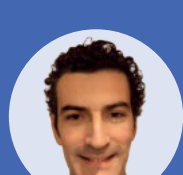
We are looking for parents who are available to man the booth and promote the school. [\[inscription\]](#)

Thank you all for your commitment and continued support for APEK and LFIK. We are counting on you to make 2025 a successful year for our school and our shared projects!

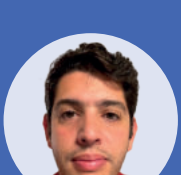
The Management Committee

The Management Committee of **A.P.E.K.** is at your service all year round.

Association des Parents d'Elèves du Kansai



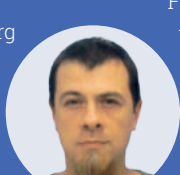
President  
Xavier CARCELLE  
apek.president@lfikeyoto.org



Treasurer  
Federico ZYLBERGLAJT  
tresorier@lfikeyoto.org



Secretary  
Kae DEBAYLES-OKI  
secetaire@lfikeyoto.org



Grégory PURET  
gpuret@lfikeyoto.org



Romain RALLU  
rrallu@lfikeyoto.org



Glen BEDJANIAN  
gbedjanian@lfikeyoto.org



Guillaume LEQUIME  
glequime@lfikeyoto.org



Agnès CATTELAN  
acattelan@lfikeyoto.org



Julien BOGAERS  
jbogaers@lfikeyoto.org